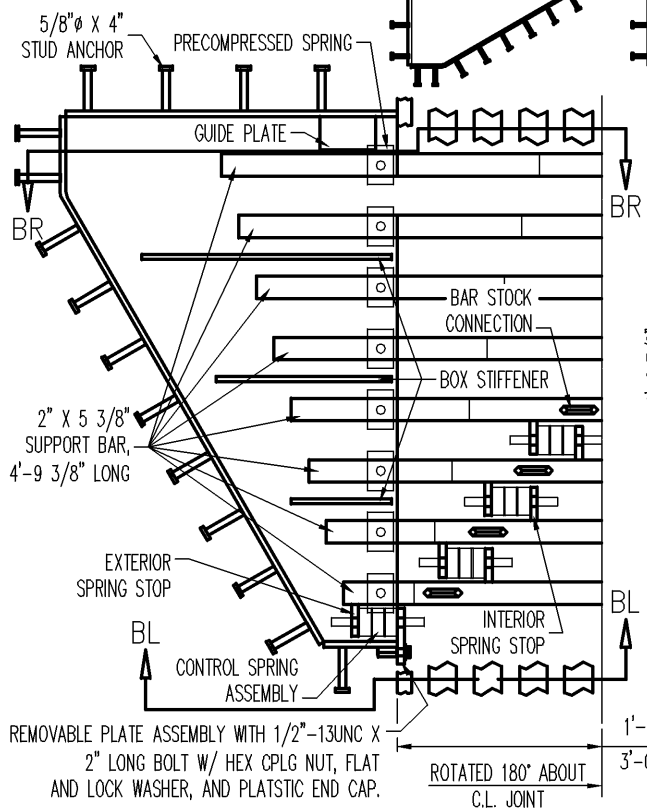
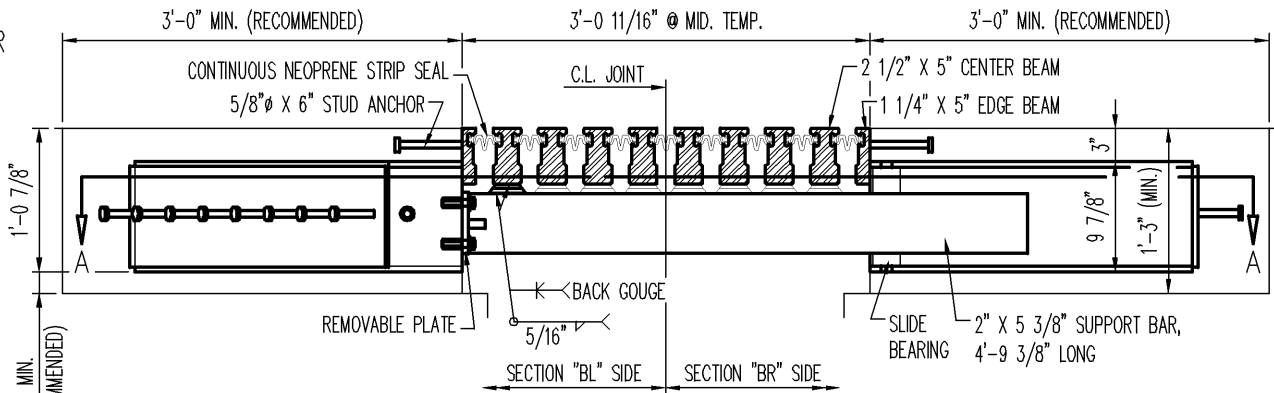


TYPICAL 'D-720' PLAN VIEW

**NOTE:**  
 ALL DIMENSIONS SHOWN ARE BASED ON A 0° SKEW.  
 ALL FABRICATED COMPONENTS SHALL BE GALVANIZED IN ACCORDANCE WITH ASTM A123.



DETAIL "A" - PLAN VIEW OF 'D-720' EXPANSION JOINT @ SUPPORT BOX



SECTION "B" - TYPICAL SECTION THROUGH 'D-720' EXPANSION JOINT @ SUPPORT BOX

1'-6 11/32" @ MID. TEMP. (HALF JOINT WIDTH)  
 3'-0 11/16" @ MID. TEMP. (TOTAL JOINT WIDTH)

DS BROWN STANDARD DETAILS FOR STEELFLEX 'D-720' MODULAR EXPANSION JOINT ASSEMBLY

SCALE: N.T.S.	DRAWN BY: BLB	CHECKED BY: -	DATE: 1/4/06	DRAWING NUMBER 1 OF 1
FOLDER: MODULAR STANDARD DRAWINGS			REVISION:	SHEET D720-PV-S

