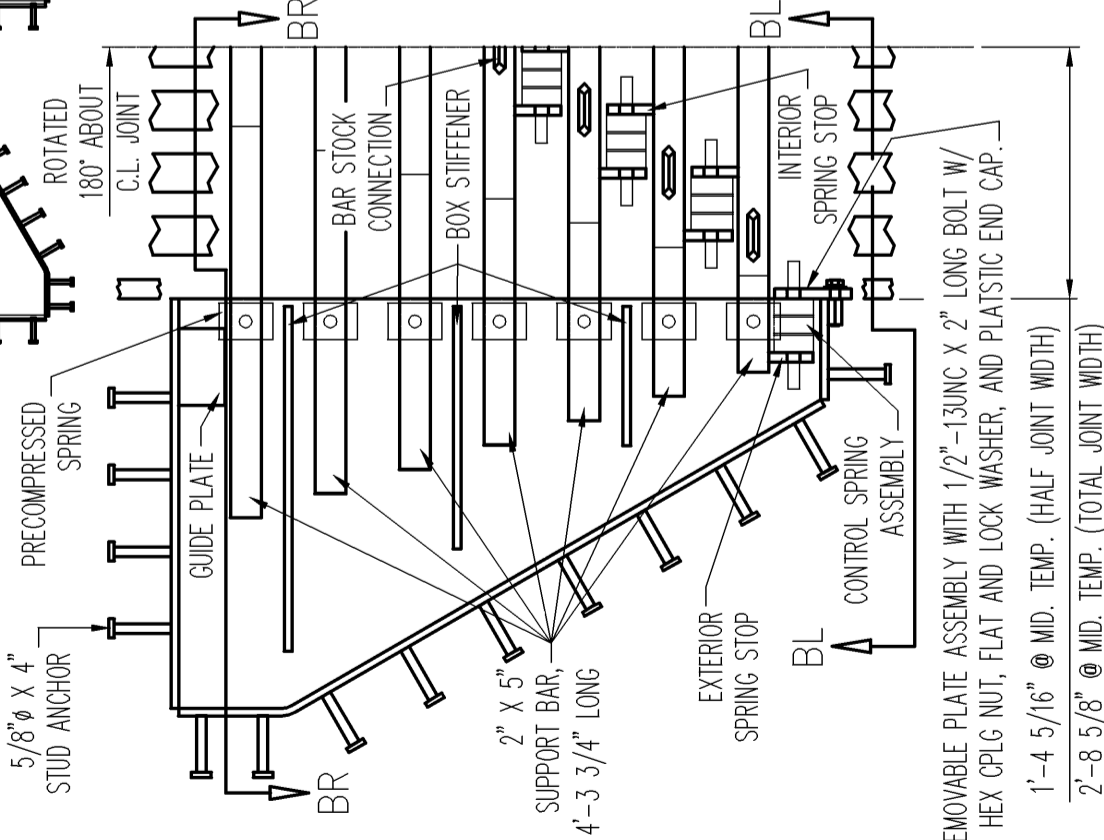


TYPICAL 'D-640' PLAN VIEW

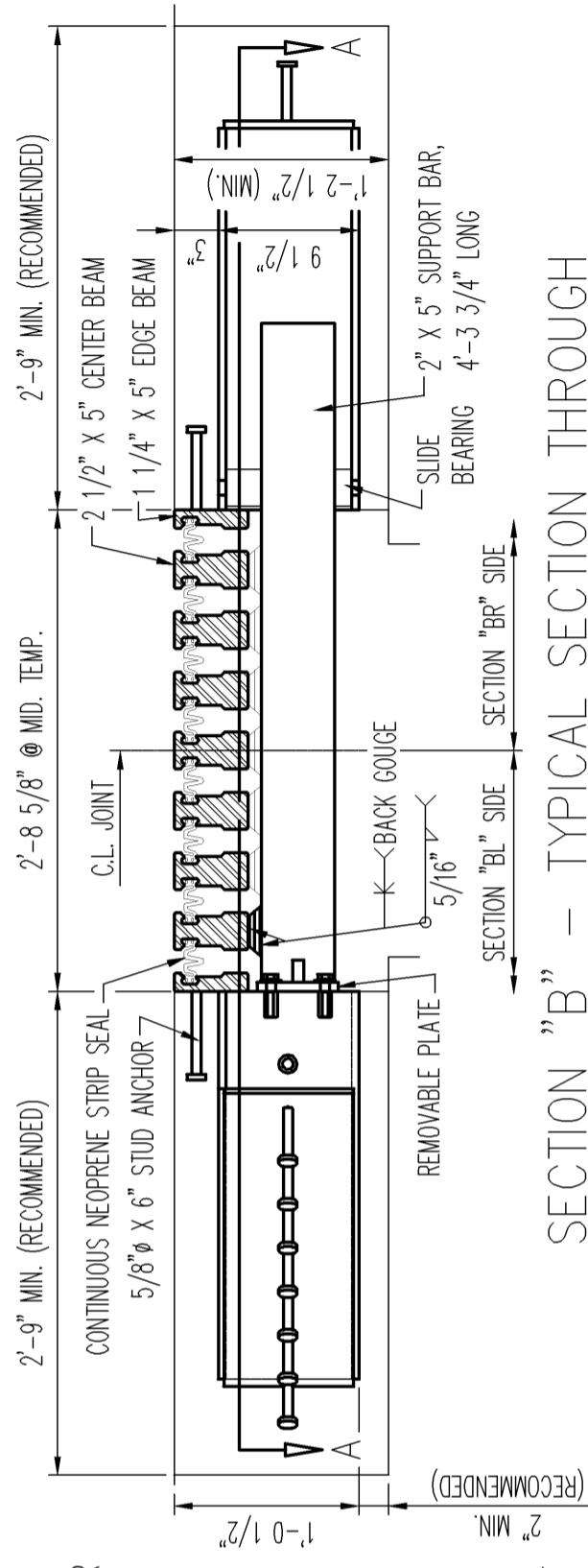
**NOTE:**

ALL DIMENSIONS SHOWN ARE BASED ON A 0° SKEW.  
 ALL FABRICATED COMPONENTS SHALL BE GALVANIZED IN ACCORDANCE WITH ASTM A123.



REMOVABLE PLATE ASSEMBLY WITH 1/2"-13UNC X 2" LONG BOLT W/ HEX CPLG NUT, FLAT AND LOCK WASHER, AND PLASTIC END CAP.  
 1'-4 5/16" @ MID. TEMP. (HALF JOINT WIDTH)  
 2'-8 5/8" @ MID. TEMP. (TOTAL JOINT WIDTH)

DETAIL "A" - PLAN VIEW OF 'D-640' EXPANSION JOINT @ SUPPORT BOX



SECTION "B" - TYPICAL SECTION THROUGH 'D-640' EXPANSION JOINT @ SUPPORT BOX

JOINT LENGTH ALONG SLOPE AS PER DESIGN REQUIREMENTS

1" MIN. (TYP.)

SHOP SPlice AS REQUIRED

CURB LINE

SLOPE VARIES

STUDS SPACED @ 6" MAX. O.C. (ALT)

SUPPORT BOXES SPACED AT 4'-3" MAX.

START UPTURN (TYPICAL)

VARIES

5/8" x 4" STUD ANCHOR

PRECOMPRESSED SPRING

GUIDE PLATE

BR

ROTATED 180° ABOUT C.L. JOINT

BAR STOCK CONNECTION

BOX STIFFENER

2" X 5" SUPPORT BAR, 4'-3 3/4" LONG

EXTERIOR SPRING STOP

CONTROL SPRING ASSEMBLY

BL

CONTINUOUS NEOPRENE STRIP SEAL

5/8" x 6" STUD ANCHOR

REMOVABLE PLATE

BACK GOUGE

5/16"

SECTION "BL" SIDE

BR

2 1/2" X 5" CENTER BEAM

1 1/4" X 5" EDGE BEAM

SLIDE BEARING

2" X 5" SUPPORT BAR, 4'-3 3/4" LONG

SECTION "BR" SIDE

1'-0 1/2" (RECOMMENDED)

A

2'-9" MIN. (RECOMMENDED)

2'-8 5/8" @ MID. TEMP.

2'-9" MIN. (RECOMMENDED)

1'-2 1/2" (MIN.)

9 1/2"

A

C.L. JOINT

REMOVABLE PLATE

BACK GOUGE

5/16"

SECTION "BL" SIDE

BR

2'-9" MIN. (RECOMMENDED)

2'-8 5/8" @ MID. TEMP.

2'-9" MIN. (RECOMMENDED)

1'-0 1/2" (RECOMMENDED)

9 1/2"

A

SECTION "B" - TYPICAL SECTION THROUGH 'D-640' EXPANSION JOINT @ SUPPORT BOX

DS BROWN STANDARD DETAILS FOR STEELFLEX  
 'D-640' MODULAR EXPANSION JOINT ASSEMBLY

SCALE: N.T.S.	DRAWN BY: BLB	CHECKED BY: -	DATE: 1/4/06	DRAWING NUMBER: 1 OF 1
FOLDER: MODULAR STANDARD DRAWINGS				SHEET: D640-PV-S

NORTH BALTIMORE, OHIO  
 CHASKA, MINNESOTA  
**D.S. BROWN**  
 www.dsbrown.com