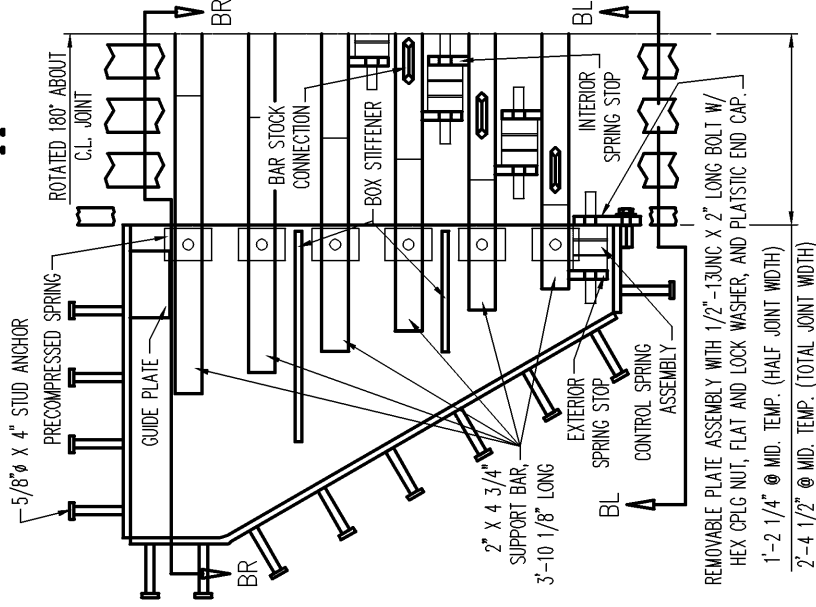


TYPICAL 'D-560' PLAN VIEW



DETAIL "A" - PLAN VIEW OF 'D-560' EXPANSION JOINT @ SUPPORT BOX

JOINT LENGTH ALONG SLOPE AS PER DESIGN REQUIREMENTS

1" MIN. (TYP.)

SHOP SPLICE AS REQUIRED

SLOPE VARIES

STUDS SPACED @ 6" MAX. O.C. (ALT)

SUPPORT BOXES SPACED AT 4'-3" MAX.

VARIES

START UPTURN (TYPICAL)

NOTE:

ALL DIMENSIONS SHOWN ARE BASED ON A 0° SKEW.

ALL FABRICATED COMPONENTS SHALL BE GALVANIZED IN ACCORDANCE WITH ASTM A123.

2'-6" MIN. (RECOMMENDED)

2'-4 1/2" @ MID. TEMP.

2'-6" MIN. (RECOMMENDED)

CONTINUOUS NEOPRENE STRIP SEAL

5/8" Ø X 6" STUD ANCHOR

C.L. JOINT

2 1/2" X 5" CENTER BEAM

1 1/4" X 5" EDGE BEAM

2'-6" MIN. (RECOMMENDED)

5/16"

BACK GOUGE

REMOVABLE PLATE

SECTION "BL" SIDE

SECTION "BR" SIDE

2" X 4 3/4" SUPPORT BAR, 3'-10 1/8" LONG

SLIDE BEARING 3'-10 1/8" LONG

1'-2 1/4" (RECOMMENDED)

1'-2 1/4" (MIN)

SECTION "B" - TYPICAL SECTION THROUGH 'D-560' EXPANSION JOINT @ SUPPORT BOX



DS BROWN STANDARD DETAILS FOR STEELFLEX
'D-560' MODULAR EXPANSION JOINT ASSEMBLY

SCALE:	DRAWN BY:	CHECKED BY:	DATE:	DRAWING NUMBER
N.T.S.	BLB	-	1/4/06	1 OF 1

FOLDER:	REVISION:	SHEET
MODULAR STANDARD DRAWINGS		D560-PV-S